

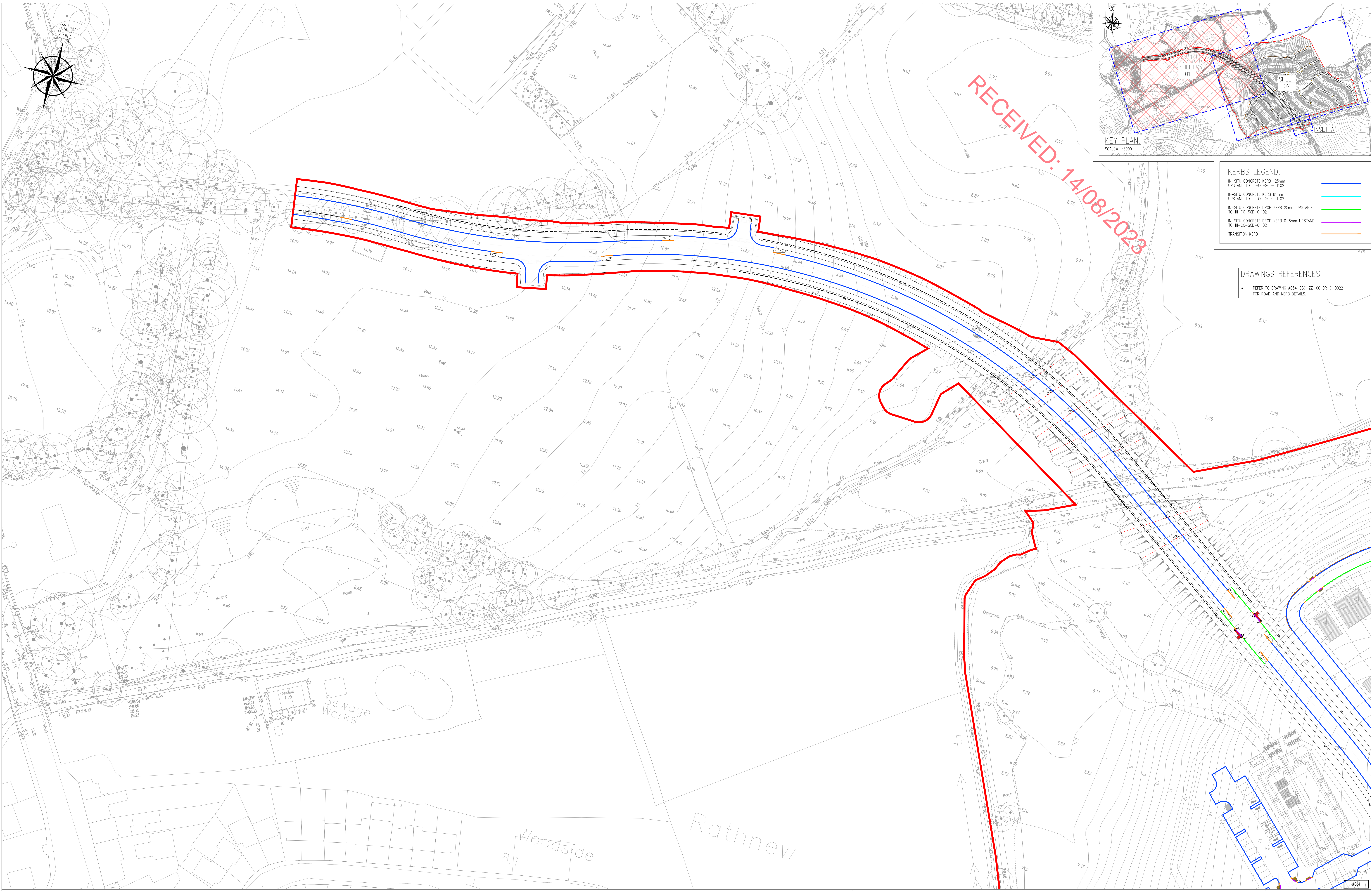
RECEIVED: 14/08/2023

KERBS LEGEND:

- IN-SITU CONCRETE KERB 125mm UPSTAND TO TII-CC-SCD-01102
- IN-SITU CONCRETE KERB 81mm UPSTAND TO TII-CC-SCD-01102
- IN-SITU CONCRETE DROP KERB 25mm UPSTAND TO TII-CC-SCD-01102
- IN-SITU CONCRETE DROP KERB 0-6mm UPSTAND TO TII-CC-SCD-01102
- TRANSITION KERB

DRAWINGS REFERENCES:

- REFER TO DRAWING A034-CSC-ZZ-XX-DR-C-0022 FOR ROAD AND KERB DETAILS.



PLANNING DRAWING.
NOT FOR CONSTRUCTION.
 ALL LEVELS GIVEN ARE
 RELATIVE TO ORDNANCE DATUM.
 THIS DRAWING HAS BEEN ISSUED FOR INFORMATION
 PURPOSES ONLY AND MUST NOT BE USED
 FOR CONSTRUCTION UNDER ANY CIRCUMSTANCES

NOTES

- For setting out refer to Architect's drawings.
- This drawing to be read in conjunction with all other Architectural and Engineering drawings and all other relevant drawings and Specifications.
- DO NOT SCALE THIS DRAWING. Use figures/dimensions only.
- No part of this document may be reproduced or transmitted in any form or stored in any retrieval system of any nature without the written permission of copyright holder except as agreed.
- Ordnance Survey Ireland Licence Number EN 0074023

Rev. No.	Date	REVISION NOTE	Drawn By	Check By
P1	12.12.2022	ISSUED FOR PLANNING	SC	NB
P2	16.06.2023	ISSUED FOR PLANNING	SC	NB
P3	20.06.2023	RED LINE BOUNDARY UPDATED	SC	NB
P4	07.07.2023	ISSUED FOR COORDINATION	SC	NB
P5	09.08.2023	ISSUED FOR PLANNING	SC	NB

Client: Keldrum Limited
 Project: Large-scale Residential Development at Tinakilly, Wicklow
 Title: Proposed Kerb Lines
 Sheet 1 of 2
 Dep. No.: A034-CSC-ZZ-XX-DR-C-0007
 Date: 07/2023
 Drawn by: SC
 Checked by: NB
 Scale: 1:500 @ A0
 Revision: P5

CS Consulting Group
 DUBLIN | LONDON | LIMERICK
 Head Office: 19-21 Dame Street, Dublin 2
 T: +353 (0)1 4545063
 E: info@csconsulting.ie
 W: www.csconsulting.ie

Quality: ISO 9001:2015
 Environment: ISO 14001:2004
 Health & Safety: OHSAS 18001:2007